

PART OF S.W. 1/4 OF SEC. 24, T.5N., R.1W., S.L.B. & M.
EASTWOOD SUBDIVISION NO. 6

134

LOTS 84-91

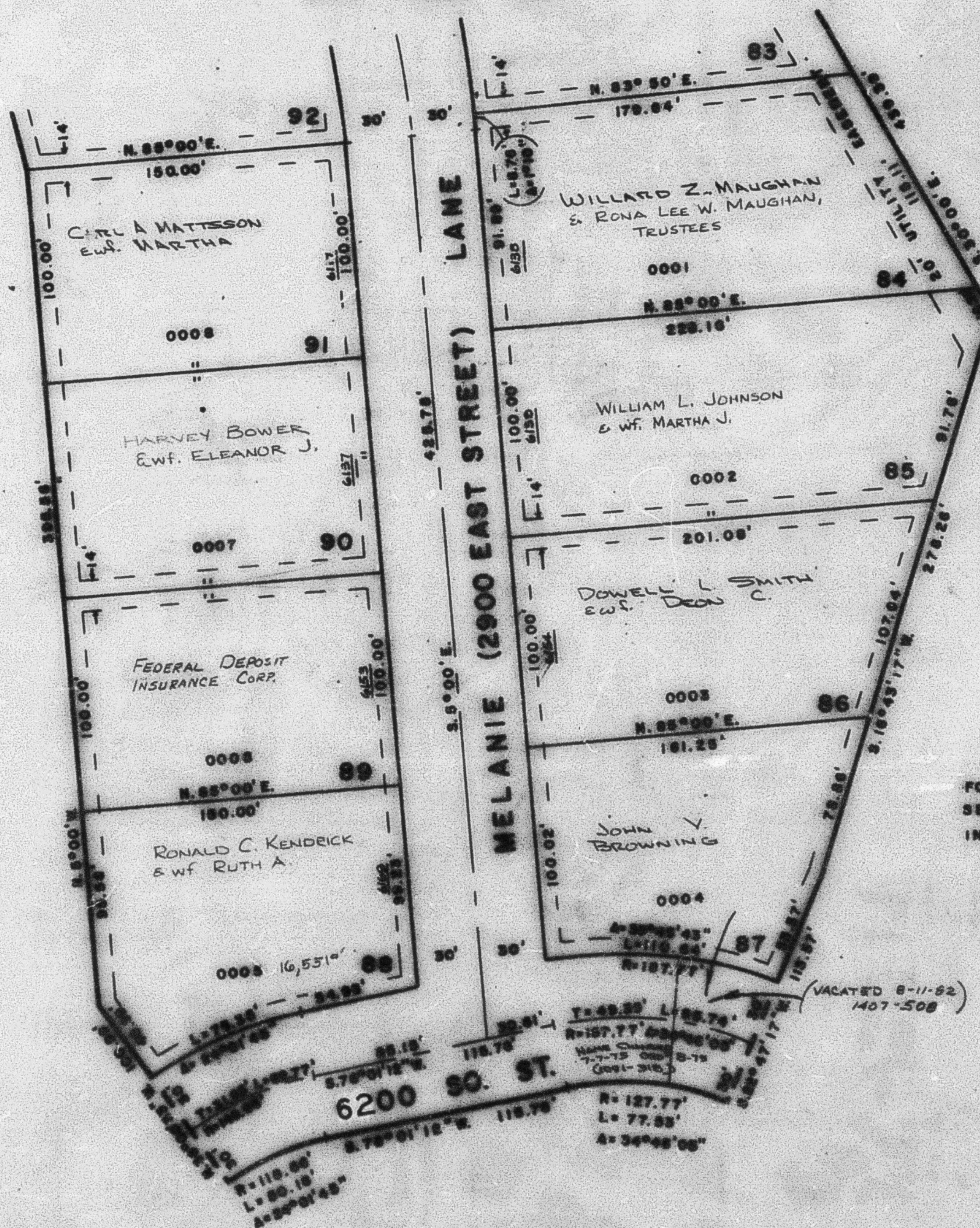
IN WEBER COUNTY

SCALE 1"=50'

TAXING UNIT: 159.

PREFIX: 07-134

SEE PAGE 133



SEE PAGE 160

SEE PAGE 99

NOTE:
 7' UTILITY EASEMENTS
 SHOWN BY DASHED LINES,
 EXCEPT WHERE SHOWN

FOR COMP. ENG. DATA
 SEE ORIG. DED. PLAT
 IN BOOK 16, PAGE 72